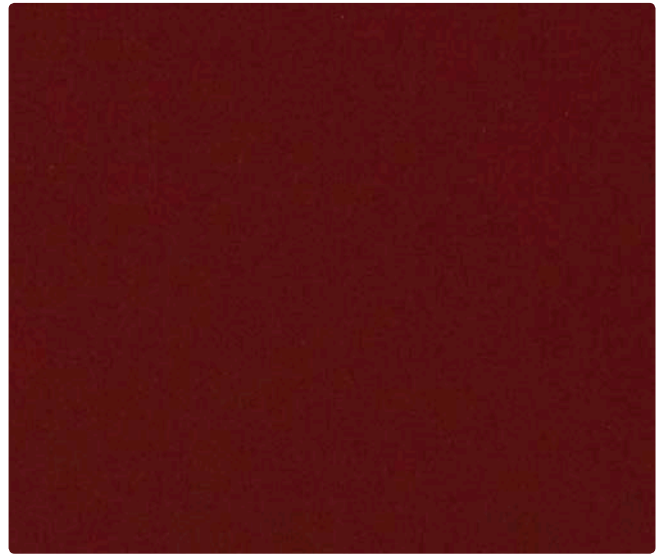




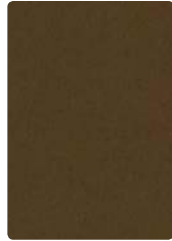
VA-007  
Parchment



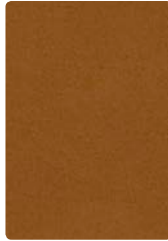
VA-017  
Croissant



VA-011  
Ruby



VA-020  
Weathered



VA-040  
Sepia



VA-027  
Snow



VA-019  
Cordovan



VA-024  
Seamist



VA-012  
Butter



VA-002  
Jonquil



VA-026  
Cliff



VA-010  
Mahogany



VA-033  
Mallard



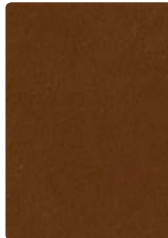
VA-023  
Wasabi



VA-009  
Bittersweet



VA-016  
Taupe



VA-030  
Saddle



VA-014  
Caribbean



VA-003  
Fern



VA-001  
Lipstick



VA-006  
Jet



VA-000  
Chocolate



VA-004  
Sapphire



VA-013  
Forest



VA-005  
Eggplant

**Application**  
Upholstery Seating

**Content**  
100% Vinyl

**Width**  
54 inches

**Abrasion** (Wyzenbeek/Cotton Duck)  
Passes 740,000 Double Rubs

**Finish**  
Resilience<sup>SR</sup>

**Reduced Environmental Impact**  
GREENGUARD Certified

**TECHNICAL INFORMATION**

Content: 100% Vinyl Width: 54" Weight: 32 oz./linear yd.	Backing: 100% Polyester Finish: Resilience <sup>SR</sup> Cleaning Code: WS, BC	Approx. Repeat: None Directional: No Railroaded: No
--	--	---

**PERFORMANCE**

Test Method	Results
Surface Abrasion: Heavy Duty	CFFA-1A/Method ASTM D4157 (Cotton Duck) Passes 740,000^ Double Rubs
Breaking Strength:	CFFA-17 / ASTM-D-751 Warp 128 lbs/Fill 93 lbs
Colorfastness to Crocking:	AATCC-8 Dry: Class 4 min / Wet: Class 4 min
Colorfastness to Light:	UV Resistance - AATCC 16, Option 3 Passes 650 Hours - Suitable for marine use
Cold Crack:	CFFA-6 Fed. Std. No. 191A - Method 5874 -20° F

**FLAMMABILITY**

California Technical Bulletin 117-2013	Passes	BIFMA	Passes
NFPA 260 (Equivalent to UFAC) Class 1	Passes	FMVSS 302	Passes
ASTM E84 (Adhered & Unadhered) Class 1 or A	Passes	IMO A.652 (16) 8.2 & 8.3	Passes

May comply with California Technical Bulletin 133 when combined with appropriate components.

**SPECIFIC TREATMENTS**

Stain Resistant with Resilience<sup>SR</sup> Abrasion Resistant Anti-Bacterial Anti-Microbial Sulfide Stain Resistant Mildew Resistant Bleach Cleanable (1:10)

**Resilience<sup>SR</sup>**

**ENDURING PROTECTION** Resilience<sup>SR</sup> represents the latest technology in Faux Leather and Vinyl Protection, enhancing performance where it is needed the most.  
**Stain Resistance:** With proper care, materials treated with Resilience<sup>SR</sup> can be easily cleaned and will guard against stains maintaining the desired surface appearance for years to come.  
**Anti-Microbial & Anti-Bacterial Protection:** Products treated with Resilience<sup>SR</sup> are engineered to inhibit bacterial growth, as well as fungus, mold and mildew spores, resulting in a more hygienic environment.  
**Abrasion Resistance:** Resilience<sup>SR</sup> provides additional wear properties and surface durability to any vinyl or faux leather, thereby increasing the life of the material.  
**Resilience<sup>SR</sup>** is not visible, and does not affect the hand of the material. **Resilience<sup>SR</sup>** is engineered to last, even after repeated cleaning and wear. Specify **Resilience<sup>SR</sup>** for the most demanding healthcare and hospitality applications.

Resilience<sup>SR</sup> complies with ASTM G-21/CFFA 120 and AATCC 147/CFFA 300 inhibiting the growth of the following organisms:  
 Aspergillus Niger Penicillium Pinaphilum Chaetomium Globosum Trichoderma Virens Aureobasidium Pullulans Staphylococcus Aureus  
 Klebsiella Pneumoniae Salmonella Choleraesuis Pseudomonas Aeruginosa

**STAIN RESISTANCE**

Stain Resistance per CFFA 141 (Determines the resistance of a fabric to staining when subjected to common house-hold stains and cleaning agents) - Class 5 (Excellent) rating:

Butter	Blood	Coffee	Hair Spray	Iodine/Betadine	Ketchup	Lipstick	Liquid Foundation	Mascara
Mayonnaise	Motor Oil	Salad Dressing	Soda	Soy Sauce	Suntan Lotion	Tea	Urine	Whiskey

**CLEANING INFORMATION**

WS: Water/Solvent Cleaner – Spot clean, with a mild solvent, an upholstery shampoo, or the foam from a mild detergent. When using a solvent or dry cleaning product, follow instructions carefully and clean only in a well-ventilated room. Avoid any product that contains carbon tetrachloride or other toxic materials. With either method, pretest a small area before proceeding.

Bleach Cleanable – 1:10 ratio = 10% bleach, 90% water solution

Prompt cleaning is always recommended. Recommended cleaning steps are listed by type of stain. For best results follow steps in order.

**Recommended Care and Cleaning Steps**

- Step 1: Mild soap and water, then rinse with fresh water and wipe dry with a clean cloth.
- Step 2: Wipe affected area with a soft cloth or soft bristle brush using a non-abrasive cleaner, i.e. Formula 409 or Fantastik. Rinse with fresh water and wipe dry.
- Step 3: 10% solution of household bleach and water. Rinse with fresh water and wipe dry.
- Step 4: 25% solution of alcohol and water. Rinse with fresh water and wipe dry.
- Step 5: 25% solution of lighter fluid or nail polish remover and water. Rinse with fresh water and wipe dry.

**Regular Cleaning and Maintenance:** Step 1 (*Dirt, Dust, Grime*)

**Oils:** Steps 1 & 2 (*Organic & Petroleum based*)

**Healthcare:** Steps 1, 2 & 3 (*Blood, Urine, Betadine, Disinfectant*)

**Food:** Steps 1 & 2 (*Ketchup, Chocolate, Coffee, Tea, Juice*)

**Difficult Stains:** Steps 1, 2, 3, 4 & 5 (*Eye shadow/Mascara, Lipstick, Crayon, Grease, Mustard, Paint*)

*NOTE: The use of commercial vinyl conditioners and protectants is NOT RECOMMENDED.*

*The information in this cleaning guide refers to performance of Resilience in tests conducted under laboratory conditions. This information does not imply a specific guarantee and does not relieve the user from the responsibility of the proper and safe use of the product and referenced cleaning agents.*

**ADDITIONAL INFORMATION**

**Custom Capabilities:** All patterns can be custom colored. Minimum yardage applies.

**^Abrasion:** Multiple factors affect fabric durability and appearance retention, including end-user application and proper maintenance. Wyzenbeek results above 100,000 double rubs have not been shown to be a reliable indicator of increased fabric lifespan.

**Memo Samples:** Please keep this card intact. Individual memo samples can be ordered on our website or by contacting customer service.

**Fabric Color Matching:** Mayer Fabrics always attempts to ship a satisfactory commercial match. Because of industry standard dye lot variation, colors may not match exactly.

**Digital Swatch Card Color Matching:** Due to color variations on different monitors and color printers, actual swatch colors may vary slightly. Please request a memo sample from Mayer Fabrics to ensure proper color representation.

**Specifications:** Specifications are correct at the time of printing. Current specifications are available on our website.

**For information or assistance with products or services, call us at 800.428.4415 or refer to our website, www.mayerfabrics.com.**



This fabric meets or exceeds these ACT performance guidelines.  
 \*Certification Marks owned by ACT\*



**MAYERFABRICS**