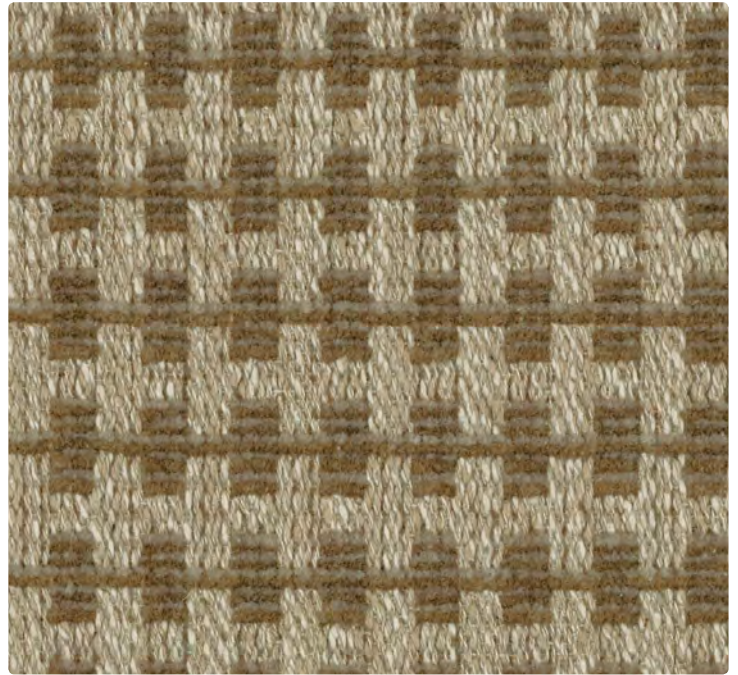




631-007 Ash



631-017 Bark



631-002 Goldenrod



631-009 Terracotta



631-014 Aegean



631-023 Olive



631-001 Cherry



631-004 Cornflower



631-013 Eucalyptus



631-008 Eggplant



631-006 Alder



631-003 Pine

**Application**  
Upholstery Seating

**Content**  
39% Polyester, 25% Viscose,  
15% Cotton, 15% Acrylic,  
6% Linen

**Width**  
54 inches / 137 cm

**Abrasion (Wyzenbeek/Cotton Duck)**  
Exceeds 150,000 Double Rubs

**Finish**  
Stain Repellent - PFOA &  
PFOS Free

**Reduced Environmental Impact**  
GREENGUARD Gold Certified  
OEKO-TEX® Certified

**TECHNICAL INFORMATION**

Content: 39% Polyester, 25% Viscose, 15% Cotton, 15% Acrylic, 6% Linen

Width: 54 inches / 137 cm

Weight: 25.43 oz./linear yard / 788.42 g/lm

Backing: Acrylic

Finish: Stain Repellent - PFOA &amp; PFOS Free

Approx. Repeat: 0.71 in/1.8 cm H, 0.71 in/1.8 cm V

Directional: Yes

Railroaded: No

**PERFORMANCE**Surface Abrasion: Heavy Duty ASTM D4157  
(Wyzenbeek/Cotton Duck)**Results**Exceeds 150,000 Double Rubs  
Multiple factors affect fabric durability and appearance retention, including end-user application and proper maintenance. Wyzenbeek results above 100,000 double rubs have not been shown to be a reliable indicator of increased fabric lifespan.

Pilling Resistance ASTM D3511

Class 4.5

Colorfastness to Crocking AATCC 8

Dry: Grade 4 min. / Wet: Grade 4 min.

Colorfastness to Light AATCC 16 Option 3

Grade 4 at 40 hours

**FLAMMABILITY**

California Technical Bulletin 117-2013

NFPA 260/UFAC Class 1

May comply with California Technical Bulletin 133 when combined with appropriate components.

**REDUCED ENVIRONMENTAL IMPACT**This product is GREENGUARD Gold Certified for low chemical and particle emissions to UL standard UL 2818 and may contribute to LEED certification. For complete information visit [mayerfabrics.com](http://mayerfabrics.com) and [UL.com/gg](http://UL.com/gg).

OEKO-TEX® Certified

**CLEANING INFORMATION**

W: Water-Based Cleaner

**DYE TRANSFER DISCLAIMER**

Certain clothing and accessory dyes (such as those used on denim jeans) may migrate to lighter colors. This phenomenon is increased by humidity and temperature and is irreversible. Mayer Fabrics will not assume responsibility for dye transfer caused by external contaminants. Please check compatibility when using this product in combination with painted or varnished surfaces.

**ADDITIONAL INFORMATION****Custom Capabilities:** All patterns can be custom colored. Minimum yardage applies.**Digital Swatch Card Color Matching:** Due to color variations on different monitors and color printers, actual swatch colors may vary slightly. Please request a memo sample from Mayer Fabrics to ensure proper color representation.**Specifications:** Specifications are correct at the time of printing. Current specifications are available on our website.This fabric meets or exceeds these ACT performance guidelines.  
\*Certification Marks owned by ACT\*Water and Stain  
Repellent Finish

MAYERFABRICS