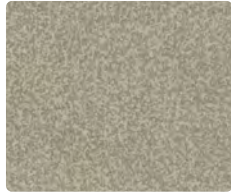




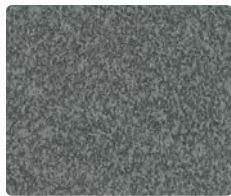
VO-007  
Quartz



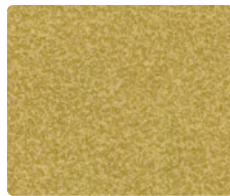
VO-017  
Mineral



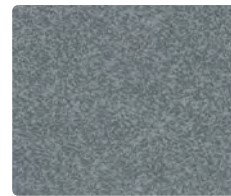
VO-046  
Zinc



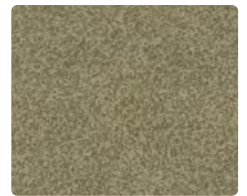
VO-026  
Flint



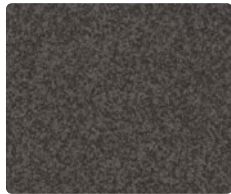
VO-002  
Gold



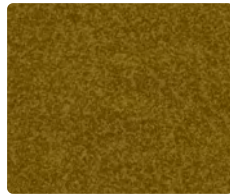
VO-036  
Silver



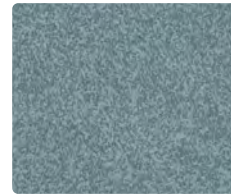
VO-027  
Champagne



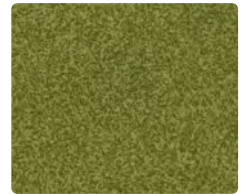
VO-016  
Charcoal



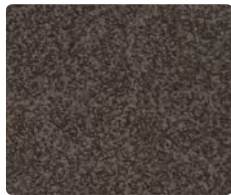
VO-012  
Bronze



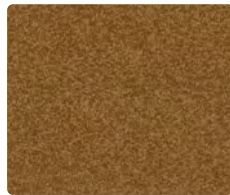
VO-004  
Agate



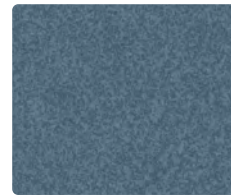
VO-003  
Peridot



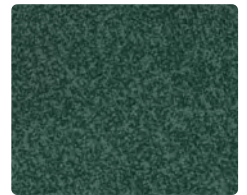
VO-000  
Ash



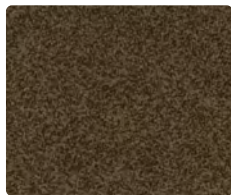
VO-009  
Henna



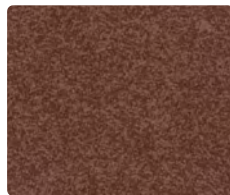
VO-014  
Arctic Blue



VO-013  
Emerald



VO-010  
Burnt Umber



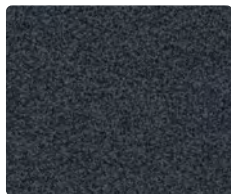
VO-019  
Sepia



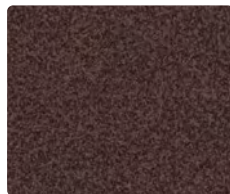
VO-024  
Prussian



VO-023  
Turquoise



VO-006  
Inkwell



VO-001  
Nutmeg



VO-005  
Amethyst



VO-034  
Aegean

Upholstery  
62% Polyurethane Polycarbonate -  
PVC Free/3% Silicone face,  
35% Polyester backing  
54 inches / 137 cm  
Exceeds 250,000 Double Rubs  
WRITE AWAY® - Soil and Stain  
Resistant Top Coat with Ink  
Resistant Technology  
GREENGUARD Certified

**TECHNICAL INFORMATION**

Application: Upholstery

Content: 62% Polyurethane Polycarbonate - PVC FREE/3% Silicone face,  
35% Polyester backing

Weight: 19 oz./linear yard / 589.06 g/lm

Width: 54 inches / 137 cm

Finish: WRITE AWAY® - Soil and Stain Resistant Top Coat with Ink Resistant  
Technology

Approx. Repeat: None

Directional: No

Shown Railroaded: No

**PERFORMANCE** 

Abrasion: Exceeds 250,000 Double Rubs  
(Wyzenbeek/Cotton Duck)

Abrasion test results exceeding ACT Performance Guidelines are not an indicator of product  
lifespan. Multiple factors affect durability and appearance retention.

Crocking: Dry: Grade 4 min / Wet: Grade 4 min

Colorfastness to Light: Grade 5 at 200 hours

Hydrolysis Resistance: 15 weeks

**FLAMMABILITY**

California Technical Bulletin 117-2013  
NFPA 260/UFAC Class 1

**REDUCED ENVIRONMENTAL IMPACT**

This product is GREENGUARD Certified for low chemical and particle  
emissions to UL standard UL 2818 and may contribute to LEED certification.  
For complete information visit [mayerfabrics.com](http://mayerfabrics.com).

Free of FR/Antimicrobial/Antibacterial Additives.

**CLEANING INFORMATION**

WS: Water/Solvent Cleaner

BC: Bleach Cleanable –

1 part bleach, 9 parts water = 10% bleach, 90% water solution.

CFC: Coated Fabrics Cleaning – Refer to Mayer website for complete cleaning info.

**DYE TRANSFER DISCLAIMER**

Certain clothing and accessory dyes (such as those used on denim jeans)  
may migrate to lighter colors. This phenomenon is increased by humidity and  
temperature and is irreversible. Mayer Fabrics will not assume responsibility for  
dye transfer caused by external contaminants. Please check compatibility when  
using this product in combination with painted or varnished surfaces.

**ADDITIONAL INFORMATION**

Custom Colors: All patterns can be custom colored. Minimum yardage applies.

Warranty: Please refer to the Mayer website for warranty information by pattern.

Digital Swatch Card Color Matching: Due to color variations on different monitors  
and color printers, actual swatch colors may vary slightly. Please request a memo  
sample from Mayer Fabrics to ensure proper color representation.

Complete and current product information available at [mayerfabrics.com](http://mayerfabrics.com).

