



441-014
Tourmaline

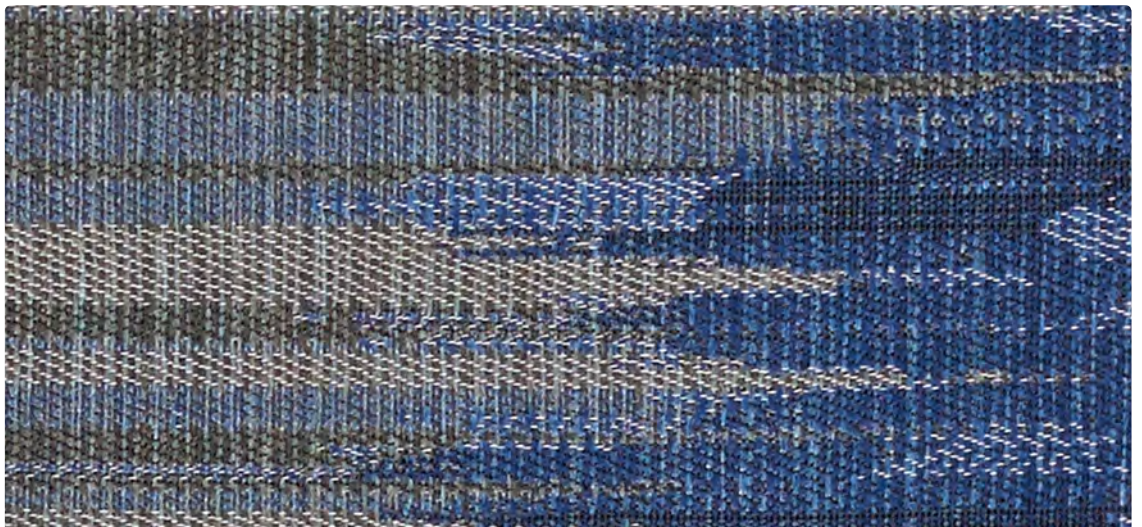
Upholstery Seating



441-000
Almond



441-003
Ivy



441-004
Dusk

Application
Upholstery Seating

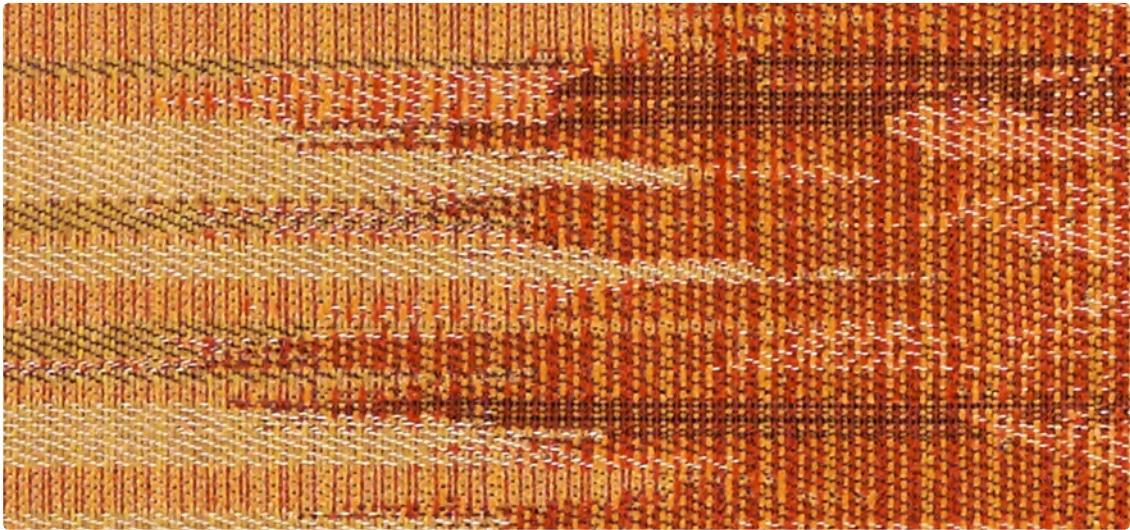
Content
78% Solution-Dyed Recycled
Nylon, 22% Solution-Dyed Nylon

Width
54 inches

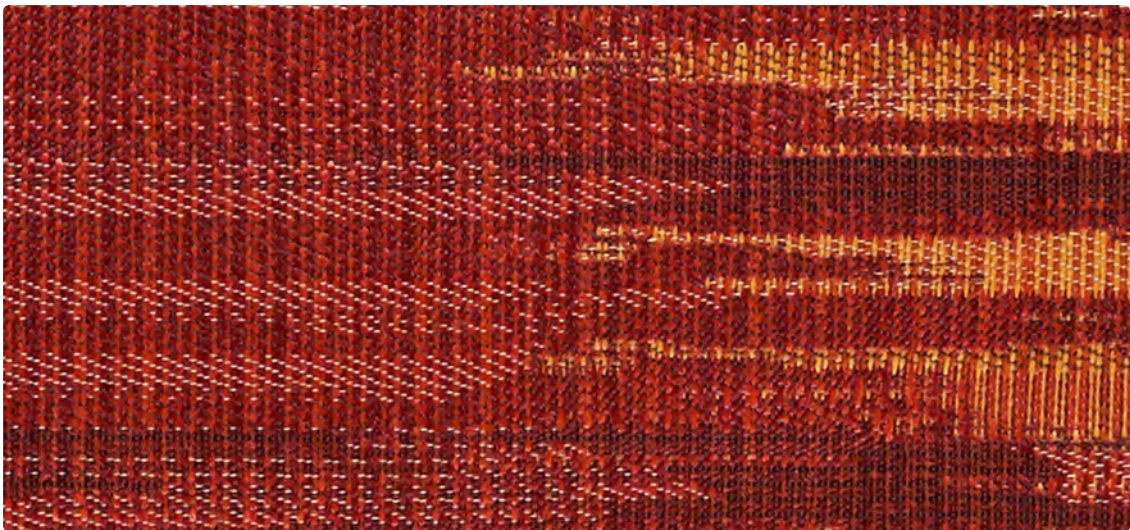
Abrasion (Wyzenbeek/Cotton Duck)
Passes 153,000 Double Rubs

Finish
Stain Repellent – PFOA &
PFOC Free

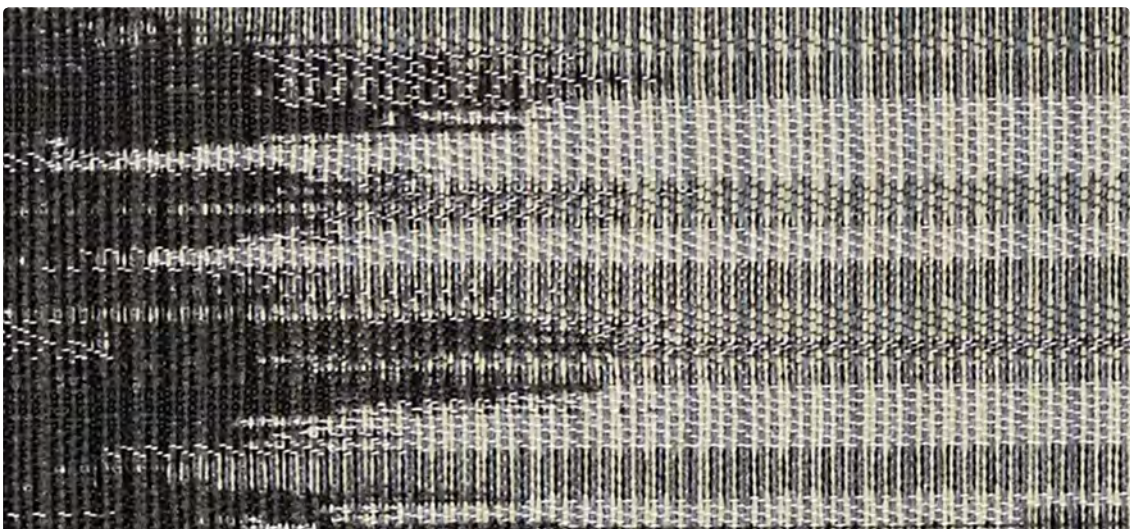
Reduced Environmental Impact
GREENGUARD Gold Certified



441-009
Sunset



441-001
Flame



441-006
Iron

TECHNICAL INFORMATION

Content: **78% Solution-Dyed Pre-Consumer Recycled Nylon**, 22% Solution-Dyed Nylon

Width: 54"

Weight: 15.23 oz./linear yard

Backing: Acrylic

Finish: Stain Repellent – PFOA & PFOC Free

Approx. Repeat: 12.5" H, 3.625" V

Directional: Yes

Shown Railroaded: Yes

PERFORMANCE

Surface Abrasion: Heavy Duty ASTM D 4157 (Wyzenbeek/Cotton Duck)

Results

Passes **153,000 Double Rubs** Multiple factors affect fabric durability and appearance retention, including end-user application and proper maintenance. Wyzenbeek results above 100,000 double rubs have not been shown to be a reliable indicator of increased fabric lifespan.

Pilling Resistance ASTM D 3511

Class 4

Colorfastness to Crocking AATCC-8

Dry: Class 4 min / Wet: Class 3 min

Colorfastness to Light AATCC 16

Class 5 at 200 hours

FLAMMABILITY

California Technical Bulletin 117-2013

NFPA 260/UFAC Class 1

May comply with California Technical Bulletin 133 when combined with appropriate components.

REDUCED ENVIRONMENTAL IMPACT

This product is **GREENGUARD Gold Certified for low chemical and particle emissions to UL standard UL 2818 and may contribute to LEED certification. For complete information visit mayerfabrics.com and UL.com/gg.**

CLEANING INFORMATION

WS: Water/Solvent Cleaner

BC: Bleach Cleanable – 1 part bleach, 9 parts water = 10% bleach, 90% water solution. Do not clean/disinfect fabric for longer than 10 minutes using the 10% bleach solution. Always rinse promptly with clean water after applying the bleach solution. Failure to do so will void any and all warranties.

ADDITIONAL INFORMATION

Custom Capabilities: All patterns can be custom colored. Minimum yardage applies.

Digital Swatch Card Color Matching: Due to color variations on different monitors and color printers, actual swatch colors may vary slightly. Please request a memo sample from Mayer Fabrics to ensure proper color representation.

Specifications: Specifications are correct at the time of printing. Current specifications are available on our website.

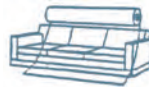


This fabric meets or exceeds these ACT performance guidelines. *Certification Marks owned by ACT®

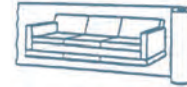


Water and Stain Repellent Finish

Railroaded: This feature allows reduction of seams and enables smoother furniture tailoring.

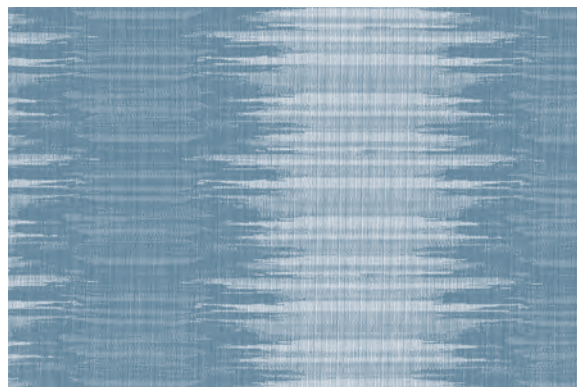


Fabric "up the roll" or "regular" position



Fabric "railroaded" or "top selvage" position

We recommend all railroaded patterns should be upholstered as shown on card.



ZAZEN – Approx. Repeat: 12.5" H, 3.625" V
Shown Railroaded



MAYERFABRICS