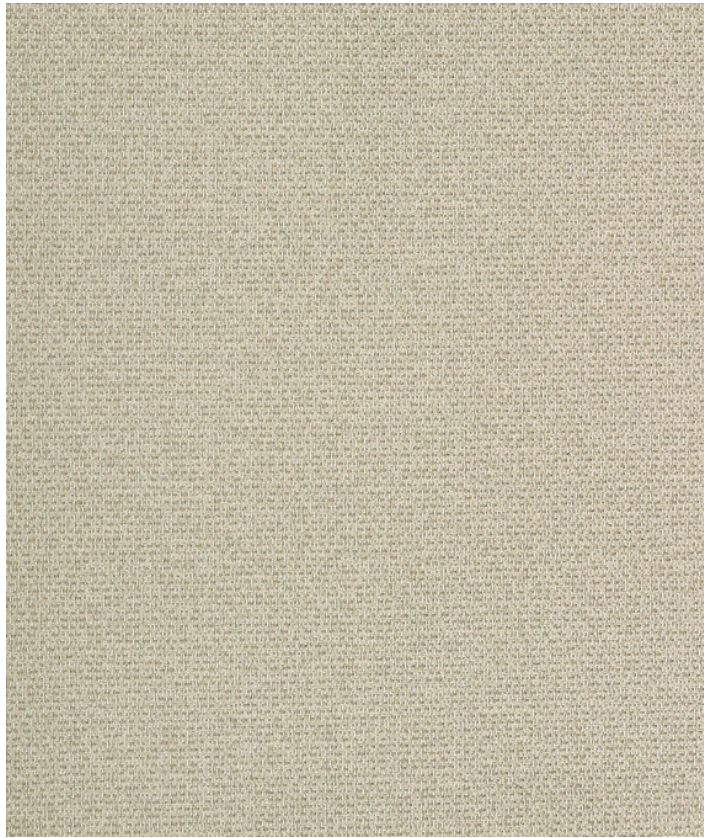


MULTI CREPE SHERMAN

PEWTER

144-016

MAYERFABRICS



CLEANING

WS: Water/Solvent Cleaner - Spot clean with a mild solvent, an upholstery shampoo, or the foam from a mild detergent. When using a solvent or dry cleaning product, follow instructions carefully and clean only in a well-ventilated room. Avoid any product that contains carbon tetrachloride or other toxic materials. With either method, pretest a small area before proceeding. Always rinse promptly with clean water.

Additional cleaning details at [www.mayerfabrics.com](http://www.mayerfabrics.com)

CATEGORY

Panel

PROPERTIES



CONTENT

100% Pre-Consumer Recycled Polyester

BACKING

None

ADDITIONAL FINISHING AVAILABLE (CHECK FOR PRICING)

Nano-Tex

FINISH

Polyester Binder

WIDTH

66"

WEIGHT

8.3 oz./ln yd

SHOWN RAILROADED

No

DIRECTIONAL

Yes

ROLL LENGTH

109 yards

BREAKING STRENGTH

Warp 150/Fill 100

ABRASION RESISTANCE

N/A

COLORFASTNESS TO CROCKING

Dry: Class 4 min/Wet: Class 4 min

COLORFASTNESS TO LIGHT

40 hours

FLAMMABILITY

Passes ASTM E84 Class 1 or A (Unadhered); Cal 117 Section E

WARRANTY

Panel | '5' Five Year Warranty