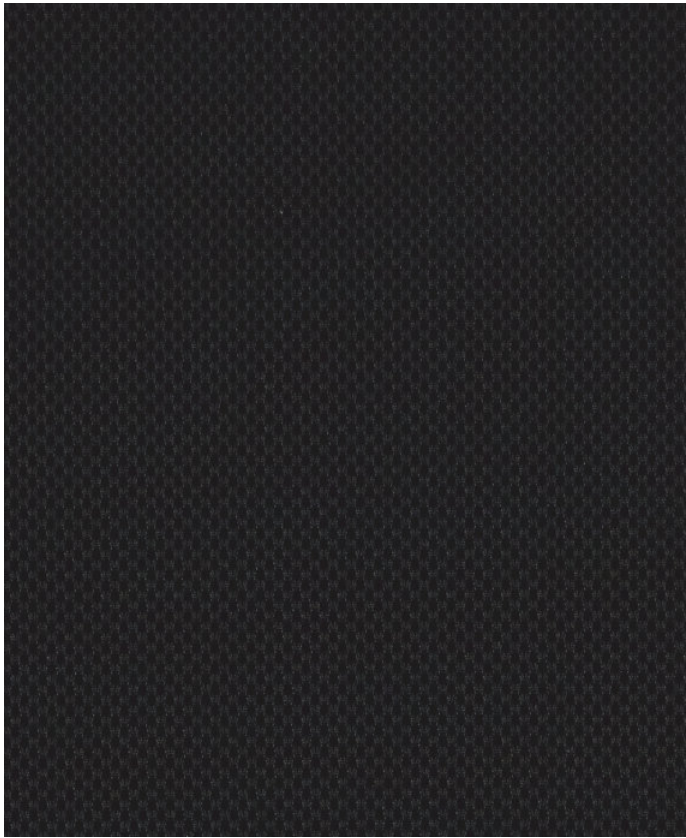


SPACER MESH BLACK

301-006

MAYERFABRICS



CLEANING

WS: Water/Solvent Cleaner - Spot clean with a mild solvent, an upholstery shampoo, or the foam from a mild detergent. When using a solvent or dry cleaning product, follow instructions carefully and clean only in a well-ventilated room. Avoid any product that contains carbon tetrachloride or other toxic materials. With either method, pretest a small area before proceeding. Always rinse promptly with clean water.

Additional cleaning details at [www.mayerfabrics.com](http://www.mayerfabrics.com)

CATEGORY

Upholstery

PROPERTIES



CONTENT

100% Polyester

BACKING

None

FINISH

None

WIDTH

54"

WEIGHT

16 oz./ln yd

SHOWN RAILROADED

No

DIRECTIONAL

Yes

ROLL LENGTH

46 yards

BREAKING STRENGTH

Warp 129/Fill 78

ABRASION RESISTANCE

Exceeds 1,002,000 Double Rubs (Wyzenbeek) Multiple factors affect fabric durability and appearance retention, including end-user application and proper maintenance. Wyzenbeek results above 100,000 double rubs have not been shown to be an indicator of increased lifespan.

PILLING RESISTANCE

Class 4.5

COLORFASTNESS TO CROCKING

Dry: Class 4 min/Wet: Class 4 min

COLORFASTNESS TO LIGHT

40 hours

FLAMMABILITY

Passes Cal TB 117-2013; NFPA 260/UFAC Class 1; ASTM E84 Class 1 or A (Unadhered); Cal 117 Section E; FMVSS 302

WARRANTY

Standard Upholstery | '5' Five Year Warranty