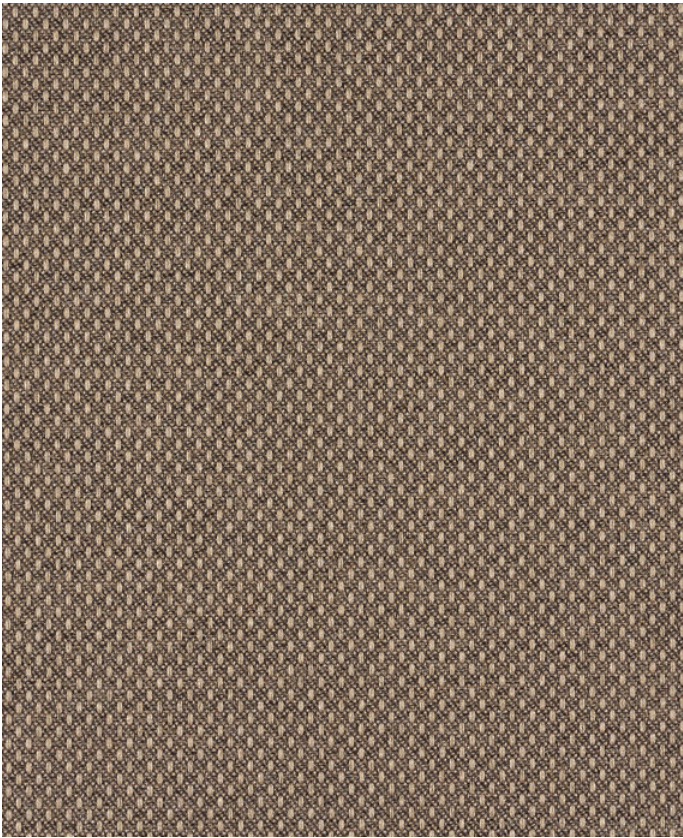


VARIANT 10 CHOCOLATE

425-000

MAYERFABRICS



CLEANING

WS: Water/Solvent Cleaner - Spot clean with a mild solvent, an upholstery shampoo, or the foam from a mild detergent. When using a solvent or dry cleaning product, follow instructions carefully and clean only in a well-ventilated room. Avoid any product that contains carbon tetrachloride or other toxic materials. With either method, pretest a small area before proceeding. Always rinse promptly with clean water.

Additional cleaning details at www.mayerfabrics.com

CATEGORY

Upholstery & Panel

PROPERTIES



CONTENT

75% Post-Consumer Recycled Polyester/25% Polyester

BACKING

Latex

FINISH

Stain Repellent

WIDTH

54"

WEIGHT

14.5 oz./ln yd

SHOWN RAILROADED

No

DIRECTIONAL

Yes

ROLL LENGTH

50-60 yards

VISUAL REPEAT

0.17 in/0.43 cm H, 0.2 in/0.51 cm V

BREAKING STRENGTH

Warp 185/Fill 254

SEAM STRENGTH

Warp: 105/Fill: 141

ABRASION RESISTANCE

Passes 140,000 Double Rubs (Wyzenbeek) Multiple factors affect fabric durability and appearance retention, including end-user application and proper maintenance. Wyzenbeek results above 100,000 double rubs have not been shown to be an indicator of increased lifespan.

PILLING RESISTANCE

Class 4

COLORFASTNESS TO CROCKING

Dry: Class 4/Wet: Class 4

COLORFASTNESS TO LIGHT

40 hours

VARIANT 10 CHOCOLATE

425-000

MAYER FABRICS

FLAMMABILITY

Passes Cal TB 117-2013; NFPA 260/UFAC Class 1; ASTM E84 Class 1 or A (Unadhered)

WARRANTY

Spectrum Upholstery & Multi-Use Collection | '10' Ten Year Warranty